

DAWN ENTERPRISES INC.

9155 Sweet Valley Dr., Valley View, OH 44125
Phone: (216) 447-1777 or (800) 548-4867
Fax: (216) 447-3416
www.dawn-ent.com

INSTALLATION INSTRUCTIONS

PART NUMBER: CAM12
FOR: 2012 & Up Toyota Camry
EFFECTIVE: 15 February 2012

INSTALLATION PACKAGE INCLUDES:

- A) 2 – Paper Hole Locators
- B) 2 – M6 x ½” Screws
- C) 2 – Lock Washers
- D) 2 – Flat Washers
- E) Instruction Sheet

EXTRA TOOLS NEEDED:

- 1. ⅜” or similar Drill Bit
- 2. Uni-bit to enlarge ⅜” pilot holes to ⅝”
- 3. Screwdriver

PLEASE READ ALL INSTRUCTIONS BEFORE BEGINNING INSTALLATION

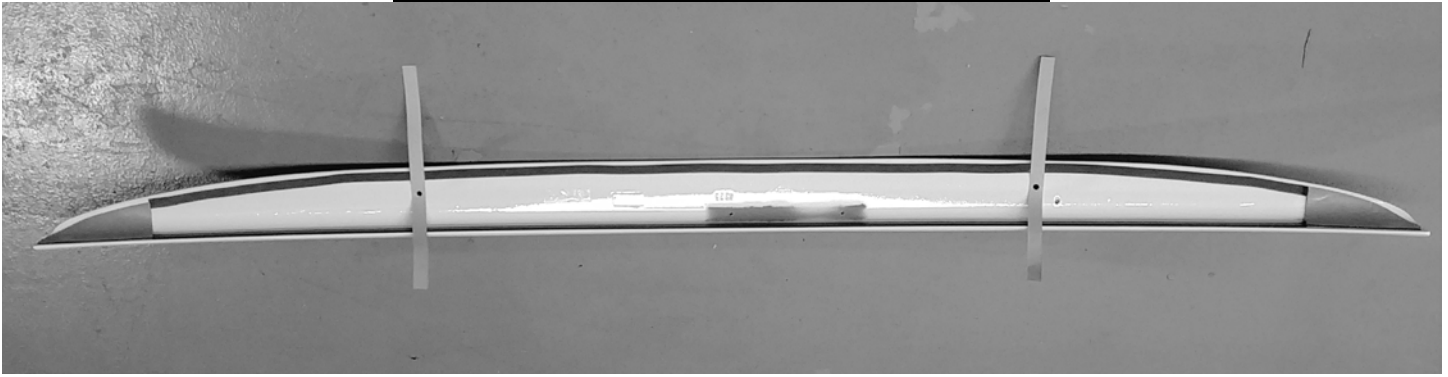
- 1. Open the trunk, **remove the trunk liner** and place a protective cover inside the trunk to capture any metal shavings.
- 2. Close the deck lid. Clean the surface of the deck lid where Sportwing® will be installed.
- 3. Set the Sportwing® onto the rear area of the deck lid where the Sportwing® is to be seated into position. Center the Sportwing® left to right. Using a grease pencil, outline each mounting area. These marks will allow you to place the Sportwing® back into the desired position later in the installation. **See Diagram A below.**

DIAGRAM A: Grease pencil outline



- 4. Remove the Sportwing® from the deck lid and place the Sportwing® upside-down on a soft cloth on the ground or your work surface. The soft cloth is necessary to protect the paint from getting scratched. **See Diagram B below.** Remove the liner from the two provided paper hole locators to expose adhesive. Perfectly center each hole locator over each mounting hole on the bottom of the Sportwing® (**NOTE: a small piece of masking tape is helpful for holding the hole locators in place.**)

DIAGRAM B: Sportwing® upside-down on a soft surface



5. Carefully flip the Sportwing® over, leaving the hole locators still fastening to the mounting holes. Make sure that none of the hole locators have moved. Place the Sportwing® back onto the outline marks that you made in Step 3. When the Sportwing® is aligned with the outline marks, tape the hole locators onto the deck lid using masking tape. Once the hole locators are taped in place, carefully lift the Sportwing® up off the deck lid, leaving the hole locators taped on the deck lid. Set the Sportwing® aside.
6. Using a $\frac{1}{8}$ " or similar drill bit, drill a $\frac{1}{8}$ " pilot hole in the exact center of each of the hole locators. After drilling $\frac{1}{8}$ " pilot holes, remove the hole locators. Next, using a uni-bit (**NOTE: we suggest using a uni-bit for a cleaner cut**), open the pilot holes from $\frac{1}{8}$ " to $\frac{3}{8}$ " in diameter. It may be necessary to drill through the secondary panel.
7. Apply zinc chromate primer or touch-up paint on the edges of the two $\frac{3}{8}$ " holes that you drilled in the deck lid.
8. Open the deck lid. Notice that you will have access to install the screws (later in the installation) to the top panel for only two of the mounting holes.
9. Place the Sportwing® back onto the outline marks made in Step 3 and check to see that the $\frac{3}{8}$ " fastening holes in the deck lid align with the mounting holes on the bottom of the mounting area. If the fastening holes do not align, adjust mounting holes using a file. When satisfied with the alignment, proceed to the next step.
10. Remove red tape liner from back of Sportwing®. Place the Sportwing® onto the decklid within the grease pencil marks made in Step #3. Open the trunk, keeping one hand on the Sportwing so that it does not fall. Then, install 2 M6 x $\frac{1}{2}$ " screws with the provided flat washers on the two holes using a screwdriver, making sure the screw does not fall between the panels. A piece of tape on the screwdriver is helpful in holding the screw in place until you have started. Loosely tighten both inside screws. After two fasteners have been started, tighten evenly. **DO NOT OVER TIGHTEN.**
11. Replace the trunk cover from the inside of the trunk. Clean up any metal shavings that may have fallen into the trunk. If you have any questions, or if you would like information about other quality Sportwing® products, please call the TOLL-FREE number at the top of this sheet. Thank you for choosing Dawn Enterprises Inc.