

## DAWN ENTERPRISES INC.

9155 Sweet Valley Dr., Valley View, OH 44125  
Phone: (216) 447-1777 or (800) 548-4867  
Fax: (216) 447-3416  
www.dawn-ent.com

## INSTALLATION INSTRUCTIONS

PART NUMBER: RLUR-FUS-MIL  
FOR: 2006 + Ford Fusion  
2006 + Lincoln MKZ  
2006 + Mercury Milan  
EFFECTIVE: 07.16.07

### INSTALLATION PACKAGE INCLUDES:

- A) Alcohol Wipes
- B) Adhesive Promoter
- C) Instruction Sheet

### PLEASE READ ALL INSTRUCTIONS BEFORE BEGINNING INSTALLATION

1. **LOCATION:**

See Diagram A below.

2. **CLEAN & PREP:**

For proper installation of roofline spoiler, clean the surface where the roofline spoiler is to be installed using alcohol wipes enclosed. Wipe off excess residue with a clean cloth. Leaving the red tape liner on the bottom of the roofline spoiler, place the spoiler in the position **as shown in Diagram A below**. Center left to right so that spoiler is even on both sides. Also, notice that you will need to leave approximately 1/8" space between the front of the roofline spoiler and the rear most edge of the roof of the vehicle. **See Diagram B on back of sheet**. Next, using a second person, hold the spoiler in desired position and using a grease pencil, outline the rear most edge of the spoiler **as shown in Diagram C on back of sheet**. This will allow you to place the spoiler back onto the exact area when adhering spoiler into place. Set the roofline spoiler aside. Apply Pro-Bond adhesive promoter in the crush swab self-applicator only to the rear glass area inside of grease pencil outline. Squeeze the applicator until you feel the applicator crush. The applicator will become wet on the end and is ready for use. Quickly apply a coat of Pro-Bond to the rear window area that will be covered by the roofline spoiler. The coat of Pro-Bond will dry quickly. Where cooler temperatures prevail, make sure that the roofline spoiler is at room temperature. The recommended glass surface and roofline spoiler should be at least 75°F/24°C for proper installation. If the surface is cold, use a heat gun or hair dryer to warm before proceeding with the installation.

3. **INSTALLATION:**

Peel the red liner from the mounting tape and having a second person standing on the opposite side of the vehicle, lightly tack the spoiler back onto the outline marks you made in Step #2. Do not touch the exposed adhesive with your fingers. When satisfied with the placement, press firmly into place using a soft cloth and apply pressure along the entire length of the spoiler to endure proper adhesion.

DIAGRAM A



DIAGRAM B

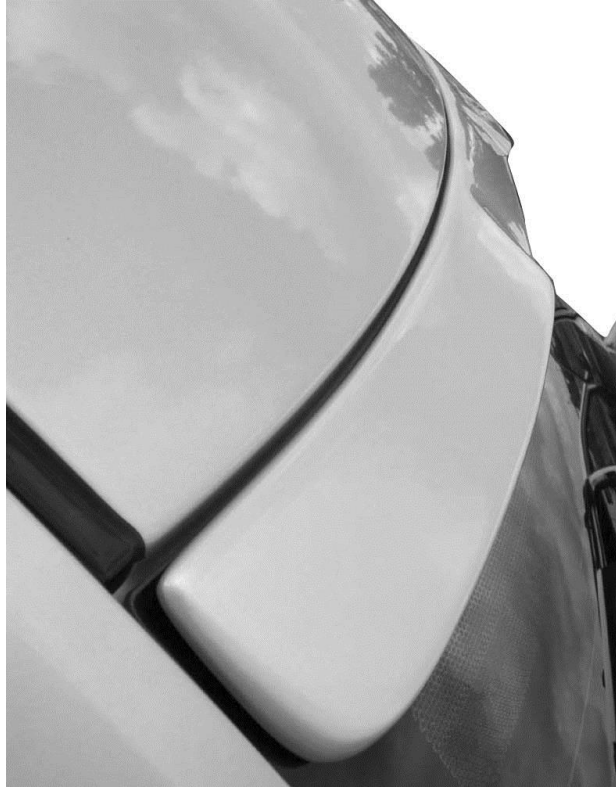


DIAGRAM C

