

**DAWN ENTERPRISES INC.**

9155 Sweet Valley Dr., Valley View, OH 44125  
Phone: (216) 447-1777 or (800) 548-4867  
Fax: (216) 447-3416  
www.Dawn-Ent.com

**INSTALLATION INSTRUCTIONS**

PART NUMBER: CORVETTE14-FM  
FOR: 2014+ Chevrolet Corvette  
EFFECTIVE: 7/20/17

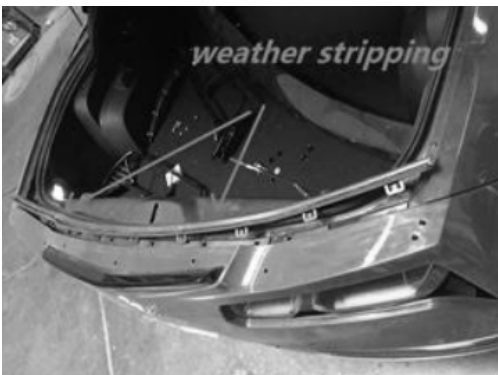
**INSTALLATION PACKAGE INCLUDES:**

- A) 4 – M6 x 5/8" Mounting Screws
- B) 4 – Lock Washers
- C) 4 – Flat Washers
- D) 4 – Paper Hole Locators

**EXTRA TOOLS NEEDED:** Masking Tape, Tape Measurer, Drill, 1/8" Drill Bit, Uni-Bit, Torx Bit

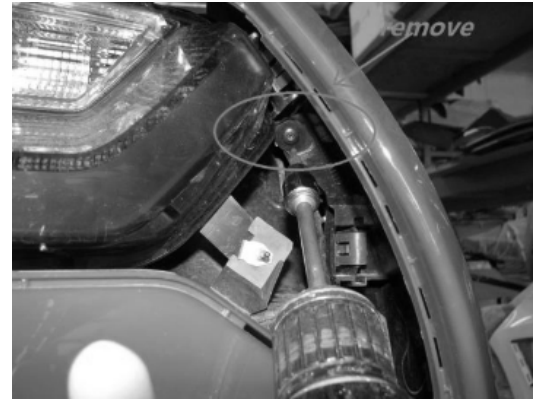
**PLEASE READ ALL INSTRUCTIONS BEFORE BEGINNING INSTALLATION**

1. Place the Sportwing® onto the deck lid and center spoiler on both the driver and passenger sides. Make sure the Sportwing® is sitting flush around the brake light. Next, take a grease pencil and outline the edges of the Sportwing® on both the driver and passenger sides. Place the Sportwing® aside on a soft cloth to prevent scratching. Proceed to place a cover or blanket inside of the trunk to protect it from plastic shavings from drilling. Place the 4 Hole Locators (provided) precisely over the 4 thread holes of the Sportwing®.
2. Carefully flip the Sportwing® upside-down on a soft surface, leaving the Hole Locators still fastened to the mounting holes. Make sure that the Hole Locators have not moved off the holes. Place the Sportwing® back onto the outline marks that you made in the previous step. Next, after Sportwing® is aligned, tape the hole locators onto the deck lid using masking tape. After all 4 holes are fastened, carefully lift the Sportwing® up from the vehicle, leaving the 4 Hole Locators taped onto the vehicle. Set the Sportwing® aside on a soft surface.
3. Using a 1/8" or similar drill bit, drill a 1/8" pilot hole in the exact center of each of the 4 hole locations. After drilling, remove the Hole Locators. Next, using a uni-bit, open the 4 pilot holes to 7/16".
4. Next, Remove the weather stripping along the trunk. Then, remove all 10 bolts located below the weather stripping.



(INSTRUCTIONS CONTINUE ON REVERSE SIDE)

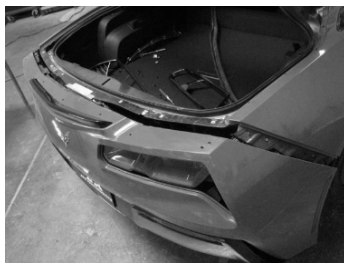
5. Remove tail light garnish on each side by carefully prying outward and removing the clips. Then, remove a torx screw on each side behind the tail light garnish.



6. Remove all 3 bolts located on the underside diffuser to the bumper. Then, remove the rear bumper splash guard and torx screws behind it. Remove two 10mm bolts holding the exhaust heat shield. As well as two screws holding the diffuser to the wheel well liner guard on each side.



7. All attachments securing the bumper should be all cleared for removal. Pull one side of the rear bumper towards the rear and it should unclip itself. Do the same on the other side. You can now carefully remove the tape on the Sportwing® and line it up with your grease marks. Insert the screws without fully tightening until you have ensured the Sportwing® is center. Once center insert all screws up through the holes and into the Sportwing®.



8. Once the Sportwing® is tightened down, you can re-install the bumper by reversing the steps listed above. Congratulations, Your Corvette now looks like a mean machine! Clean up any plastic shavings, and you are done. If you have any questions, or would like more information about other quality Sportwing® products, please call the TOLL-FREE number at the top of this sheet. Thank you for choosing Dawn Enterprises Inc.