

DAWN ENTERPRISES INC.

9155 Sweet Valley Dr., Valley View, OH 44125
Phone: (216) 447-1777 or (800) 548-4867
Fax: (216) 447-3416
www.dawn-ent.com

INSTALLATION INSTRUCTIONS

PART NUMBER: XTERRA
FOR: 2005 + Nissan Xterra
EFFECTIVE: 12.01.05

INSTALLATION PACKAGE INCLUDES:

- A) 2 – 3/4" Mounting Screws
- B) 2 – Lock Washers
- C) 1 – Black Hole Cap
- D) Template (*flip template over for passenger side*)
- E) Adhesive Pads (*for an unpainted Sportwing®*)
- F) Instruction Sheet

PLEASE READ ALL INSTRUCTIONS BEFORE BEGINNING INSTALLATION

1. Wear proper eye protection and make sure the area where Sportwing® will be installed is at room temperature, clean and free of wax.
2. **See Diagram A below.** Leaving the paper liner on the bottom of the mounting feet, center the Sportwing® left to right on the vehicle and position the Sportwing® for installation. Using a grease pencil, outline both mounting feet. **See Diagram B on back of sheet.** Set the Sportwing® aside.
3. Place the drivers' side TEMPLATE, provided, onto the outline of the mounting feet made in Step #2. **See Diagram C on back of sheet.** Before drilling, **see Diagram D on back of sheet**, and notice the factory rubber plug directly below where drivers' side mounting foot sits. Before drilling, unplug this plug from the hatch and push wires to the side leaving hatch slightly ajar. Using a 5/32" drill bit, drill down through the designated spot on the template through the top panel only. Be careful not to drill into wiring. Flip TEMPLATE over and repeat procedure on passenger side (**NOTE: see Diagram E on back of sheet.** *There is no factory cut out hole on the passenger side, so it will be necessary to drill through both panels of the hatch. Be careful not to drill too far into the rain channel. We insist using a drill stopper to prevent from drilling into the rain channel of the hatch*). After drilling through second panel, open hatch. Using a 5/8" hole saw, open second panel only to 5/8" to give you access for your drill and socket wrench later. A HOLE CAP has been provided to snap into this hole upon finishing installation.
4. Close hatch. Peel the paper liner from the bottom of the mounting feet and place the Sportwing® back onto the outline marks made in Step #2. Press firmly into place.
5. Open the hatch (**NOTE: prior to drilling, it is important to protect the installation area. Place a drop cloth in this area to prevent shavings from accumulating in the drip well channel and bumper area). Using a 5/32" drill bit, drill up through the 5/32" holes that you made in Step #2, up into the bottom of the mounting feet (**NOTE: when drilling, you must use a drill stopper to prevent from drilling through the top of the Sportwing®**). Using a ratchet with 5/16" socket, install MOUNTING SCREWS with LOCK WASHERS and tighten. **DO NOT OVER TIGHTEN.****
6. Clean up any metal shavings that may have fallen into the trunk. If you have any questions, problems or if you would like information about other quality Sportwing® products, please call the TOLL FREE number at the top of this sheet. Thank you for choosing Dawn Enterprises Inc.

DIAGRAM A

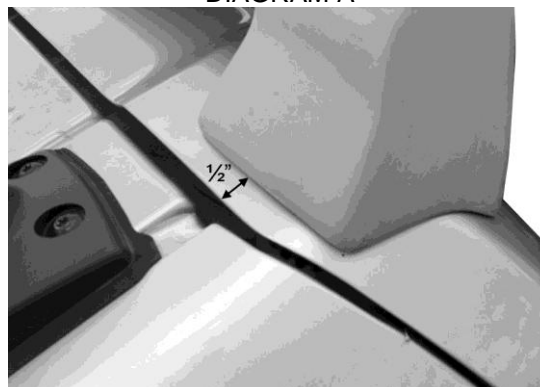


DIAGRAM B
Outline of mounting foot

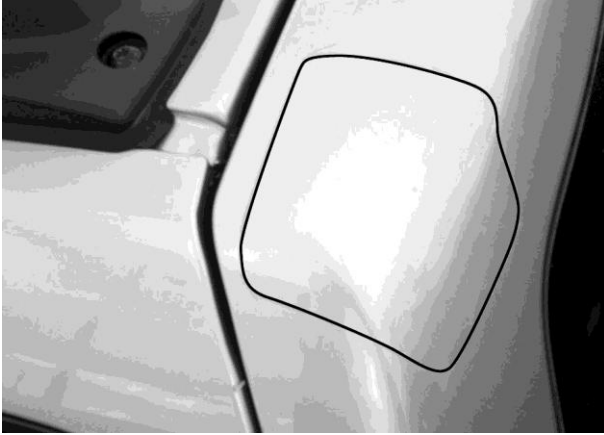


DIAGRAM C



DIAGRAM D
Drivers side
5/32" hole in top panel of hatch made from TEMPLATE in Step #3.



Remove factory plug for access to top panel of hatch.
Replace upon finishing.

DIAGRAM E
Approximate location of 5/32" drill bit exit through secondary panel (**NOTE:** after drilling through top panel and secondary panel of hatch, you will need to open 5/32" pilot hole to 5/8" in second panel only using a hole saw. A black 5/8" HOLE PLUG as been provided upon finishing).

