

DAWN ENTERPRISES INC.

9155 Sweet Valley Dr., Valley View, OH 44125
Phone: (216) 447-1777 or (800) 548-4867
Fax: (216) 447-3416
www.dawn-ent.com

INSTALLATION INSTRUCTIONS

PART NUMBER: MAZDA310
FOR: 2010 + Mazda 3
EFFECTIVE: 09.15.09

INSTALLATION PACKAGE INCLUDES:

- A) 4 – 1" Mounting Screws
- B) 4 – Lock Washers
- C) Adhesive Pads (*for unpainted Sportwing®*)
- D) 1 – Template (drivers' side, flip template over for passenger side template)
- E) 4 – Black Hole Caps
- F) Instruction Sheet

EXTRA TOOLS NEEDED:

- 1. 1 – 5/32" Drill Bit Extra Long 6"
- 2. 1 – 5/8" Hole Saw to open 5/32" pilot holes in secondary panel of deck lid

PLEASE READ ALL INSTRUCTIONS BEFORE BEGINNING INSTALLATION REMOVE TRUNK LINER!!!!

- 1. Along the drivers' side, measure **5 ½"** from the tip of the trunk lid back toward the rear of the car and place a mark with a grease pencil. Repeat procedure on other side. **Refer to Diagram A on back of sheet.**
- 2. Leaving paper liner on bottom of mounting feet, place the Sportwing® on the marks made in Step #1 so that as you face the rear of the car, the front tips of the Sportwing® rests on the mark. Center the Sportwing® exactly from left to right along the marks you made in Step #1. Using a grease pencil, outline both mounting feet. Set the Sportwing® aside.
- 3. **See Diagram B on back of sheet.** Before drilling you will need to push factory wire harness on drivers' side to the side, as shown in Diagram B.
- 4. Close the deck lid. Starting on the drivers' side, measure down **7"** from the front corner of the trunk lid where it meets the rear window glass and make a mark. **See Diagram C on back of sheet.** Repeat procedure on other side. Next, using the same **7"** mark, line up the drivers' side template, provided, with the edge of the trunk at the **7"** mark, **See Diagram C on back of sheet.** Flip template over and repeat procedure on passenger side.
- 5. Before drilling holes in deck lid, slightly lift deck lid so when drilling, you do not drill into struts that hold deck lid up. Also, remember to push factory wire harness aside as noted in Step #3. Holding drill straight up, drill 5/32" holes through the two (2) fastening hole locations on the drivers' side template through the top panel of the deck lid and continue drilling through the secondary panel. When drilling inside most hole on template, **see Diagram D on back of sheet**, as to where drill bit should exit. Keep 5/32" drill bit on flat area of secondary panel, **as shown on Diagram D** so that later on in installation your 5/8" hole cap, provided, will lie flat on the flat area of panel. Repeat this procedure on the passenger side by flipping template over (**NOTE: when drilling these holes, we insist using a drill stopper to prevent from drilling into the rain channel. Only extend drill bit ½" past drill stopper when drilling these holes**).
- 6. Open the trunk and using a 5/8" hole saw, open up the 5/32" pilot holes drilled in the secondary panel to 5/8". This will give you access to the top panel for your socket wrench later. Repeat procedure on other side. 5/8" black hole caps have been provided to cover these holes upon finishing.
- 7. Close the trunk and remove the paper liner from the bottom of the mounting feet. Place the Sportwing® back onto the outline marks made in Step #2 and press firmly into place.
- 8. Open the trunk and switch back to the 5/32" drill bit and drill up into the bottom of the mounting feet using the mounting holes drilled in top panel in Step #3 (**NOTE: when drilling, we insist using a drill stopper to prevent from drilling up through the top of the Sportwing®**). Using a ratchet with 5/16" socket, install mounting screws with washers and tighten firmly (**NOTE: be careful not to over tighten**). Use the black hole caps provided to cover your holes in the secondary panel. Repeat procedure on other side.

9. Clean up any metal shavings that might have fallen into the trunk and you are done. If you have any questions, problems or if you would like information about other quality Sportwing® products, please call the TOLL FREE number at the top of this sheet. Thank you for choosing Dawn Enterprises Inc.

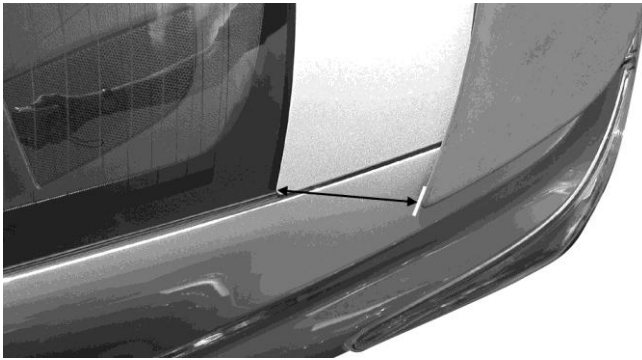


DIAGRAM A

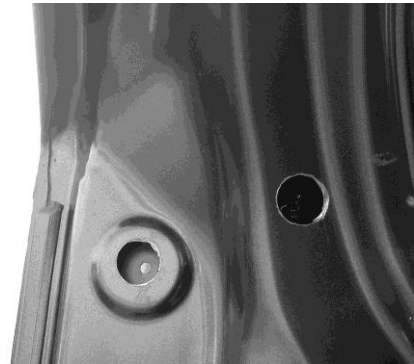


DIAGRAM B

See Step #3 before drilling any holes. Tape factory wire harness to the side or you will risk drilling into harness (**NOTE: reach between the opening in the secondary panel for access to the wire harness**).



DIAGRAM C

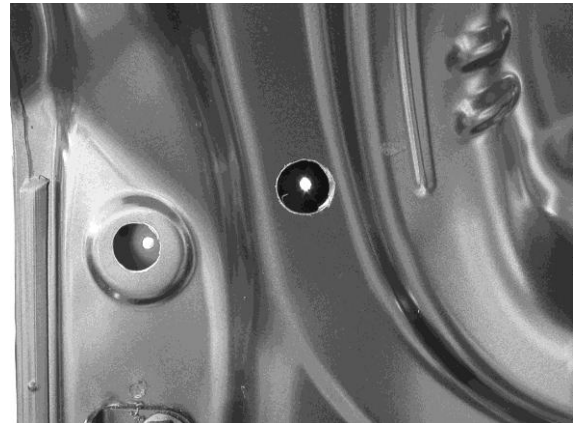


DIAGRAM D

See Step #5 when drilling holes through top panel of deck lid and continue drilling through the secondary panel. This is the approximate area drill bit should exit secondary panel.