

DAWN ENTERPRISES INC.

9155 Sweet Valley Dr., Valley View, OH 44125
Phone: (216) 447-1777 or (800) 548-4867
Fax: (216) 447-3416
www.dawn-ent.com

INSTALLATION INSTRUCTIONS

PART NUMBER: MAX07
FOR: 2007 + NISSAN MAXIMA
EFFECTIVE: 11.15.06

INSTALLATION PACKAGE INCLUDES:

- A) 3 – ¾" Mounting Screws
- B) 3 – Lock Washers
- C) 2 – Electrical Connectors
- D) Adhesive Pads (for an unpainted Sportwing®)
- E) Instruction Sheet

PLEASE READ ALL INSTRUCTIONS BEFORE BEGINNING INSTALLATION

1. **REMOVE TRUCK COVER.** See Diagram A below. Starting on the drivers side, measure down 12 ¼" from the tip of the trunk lid back toward the rear of the car and place a mark with a grease pencil. Repeat procedure on other side.
2. Leaving the paper liner on the bottom of mounting area, place the Sportwing® on the marks made in Step #1 so that as you face the rear of the car, the front tips of the Sportwing® rests on the mark. Center the Sportwing® from left to right along the marks made in Step #1. Using a grease pencil, outline each outer mounting area.
3. Set the Sportwing® aside. Open the deck lid and notice the two round factory cut outs in the secondary panel of the deck lid, see Diagram B on back of sheet for drilling outside fastening locations. Starting on the drivers side, using a 5/32" drill bit and drilling from inside of the deck lid, drill a 5/32" hole off center of the factory cut out hole towards the inside of the deck lid, as shown in Diagram B on back of sheet, using only the lower cut out hole as shown. **DO NOT** drill hole in upper most cut out hole. Repeat procedure on passenger side. Leaving deck lid open, see Diagram C on back of sheet, for drilling center fastening hole and wire harness hole. Notice rectangular factory cut out hole in the center of the deck lid just below where the Sportwing® will sit. Using a 5/32" drill bit, using measurements as shown in Diagram C, drill a 5/32" hole for the center fastening hole and a 5/32" pilot hole for wire harness hole. After drilling 5/32" pilot hole for wire harness, you will need to open wire harness hole only to 3/8".
4. Close the trunk and remove the paper liner from the bottom of the mounting feet and feed the brake light wires through the hole made in Step #3 (**NOTE: be careful not to crimp the brake light wires as you position the Sportwing® for installation**). Place the Sportwing® back onto the outline marks made in Step #2 and press firmly into place.
5. Open the trunk and switch back to the 5/32" drill bit and drill up into the bottom of the mounting area of Sportwing® using the three mounting holes drilled in Step #3 (**NOTE: when drilling, we suggest you use a drill stopper to prevent from drilling up through the top of the Sportwing®**). Using a ratchet with 5/16" socket, install mounting screws with lock washers and tighten firmly. **DO NOT OVER TIGHTEN.**
6. Run the Sportwing® harness wires down towards the drivers side lower corner where there is a factory oval black rubber plug. Remove plug and you will notice a group of wires. Using the electrical connectors provided, connect the hot (red) wire of the Sportwing® to the red wire with thin green stripe. Next, connect the ground (black) wire of the Sportwing® to the thinner black wire in same area. Check connections by stepping on brake pedal.
7. Clean up any metal shavings that might have fallen in the trunk and you are done. The installation should take no longer than 40 minutes. If you have any questions, problems or if you would like information about other quality Sportwing® products, please call the TOLL FREE number at the top of this sheet. Thank you for choosing Dawn Enterprises Inc.

DIAGRAM A

It is important that you use the 12 ¼" measurements for Sportwing® to fit properly on deck lid.

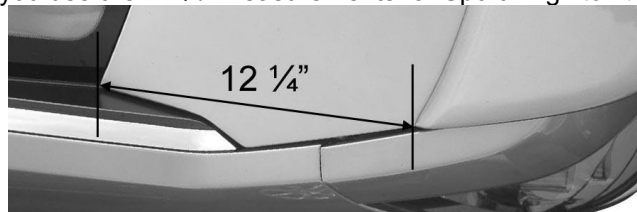
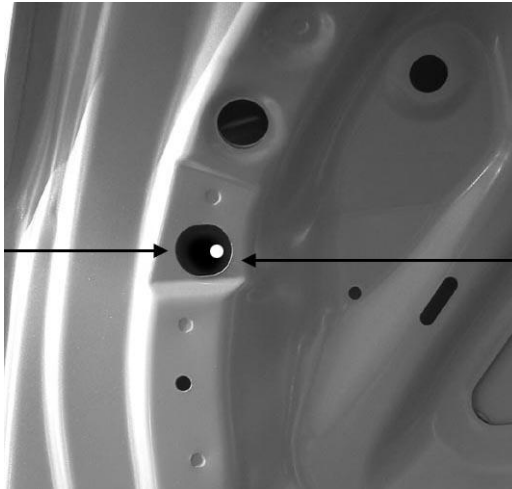


DIAGRAM B

Starting on the drivers side, using a 5/32" drill bit, drill a 5/32" hole through the top panel of the deck lid, drilling off center, more towards the passenger side, through the lower factory cut out hole (**NOTE: later on in the installation when drilling up into the bottom of the Sportwing[®], we insist that when drilling you use a drill stopper to prevent from drilling through the top of the Sportwing[®].**)



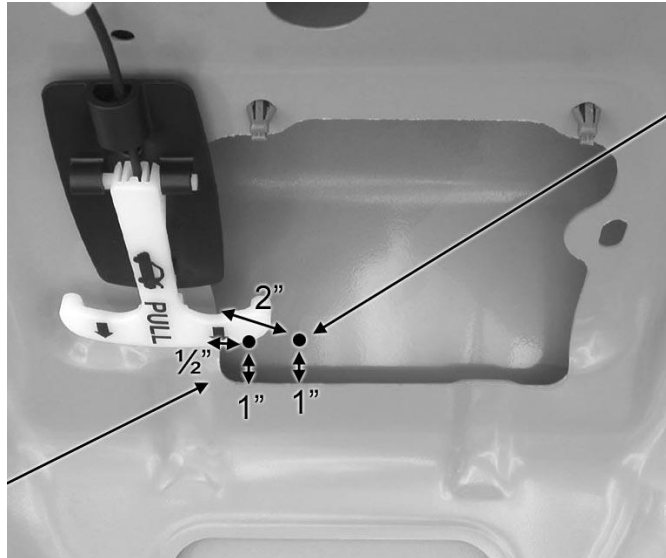
IMPORTANT: Drill fastening hole at this one location per side only.



Close up of off center 5/32" hole.

DIAGRAM C

Measure in 1/2" from side edge of secondary panel and 1" from lower edge for wire harness hole. Wire harness hole for Sportwing[®] brake light wires to go through. Drill 5/32" pilot hole, then open this hole to 3/8".



Center fastening hole location, 2" from side edge and 1" up from lower edge, then, drill 5/32" hole through deck lid and up into the bottom of the mounting area of the Sportwing[®]. Using a ratchet with 5/16" socket, install mounting screw with lock washer and firmly. **DO NOT OVER TIGHTEN.**

DIAGRAM D



Run Sportwing[®] harness wires down toward this drivers side trunk hinge. Remove this factory rubber plug and using electrical connectors, provided, connect the hot (*red*) wire of the Sportwing[®] to the red wire with thin green stripe. Next connect the ground (*black*) wire of Sportwing[®] to the thin black wire in some area. Replace plug upon finishing.